

# ANCORA

## WATERFRONT APARTMENT

506A, 606A, 706A, 806A, 906A, 1006A,  
1106A, 1206A, 1306A, 1406A, 1506A

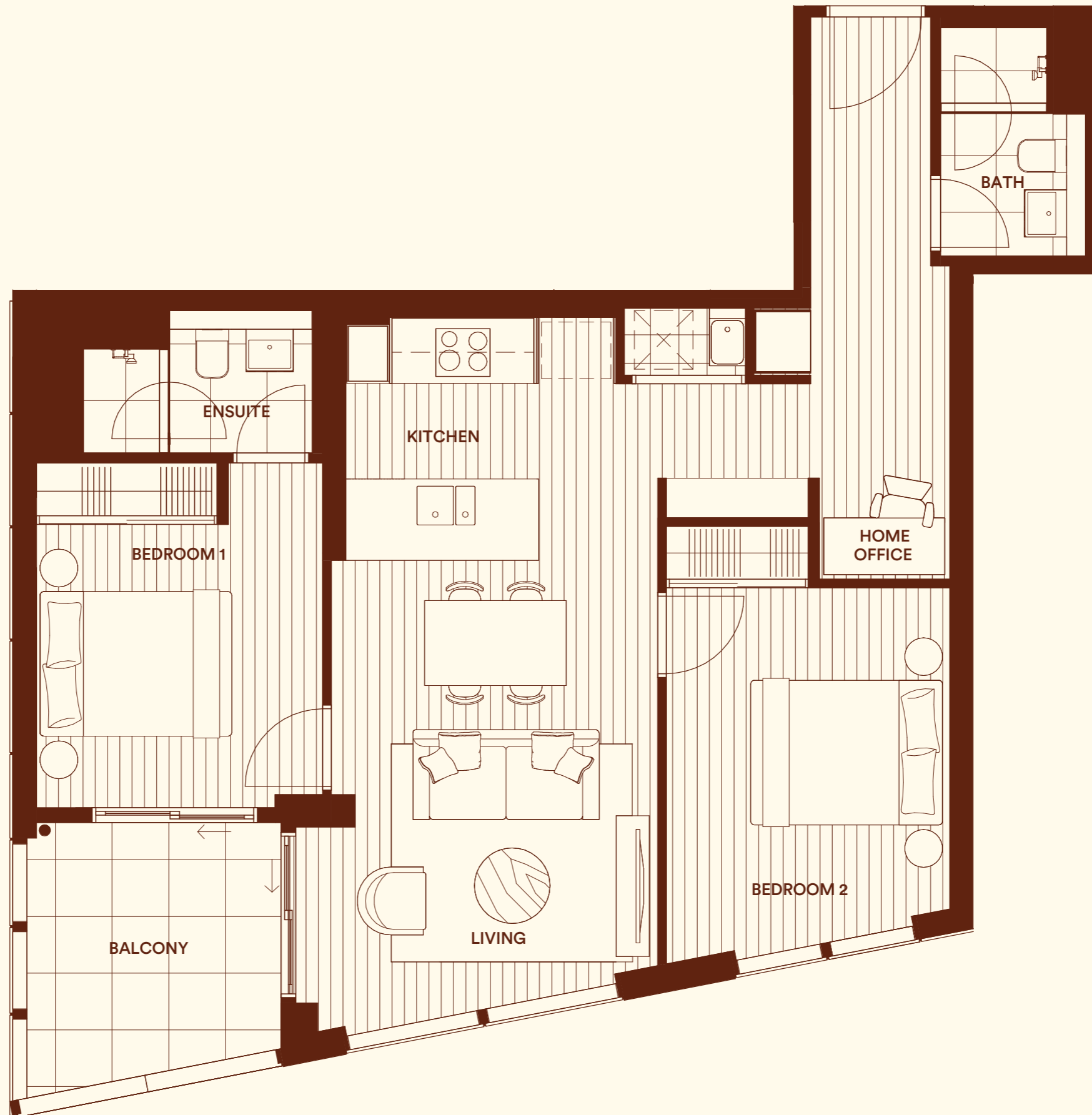
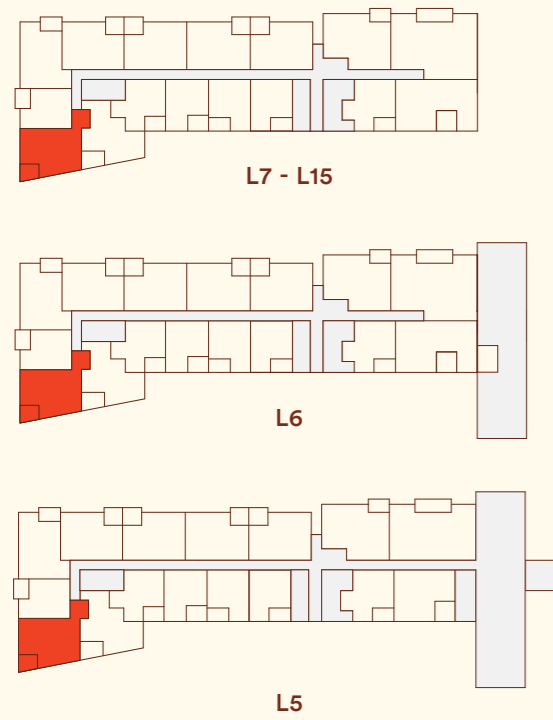
TYPE 2B02

2 BED + 2 BATH + 1 STUDY + 1 CAR

INTERNAL — 79M<sup>2</sup>

BALCONY — 9M<sup>2</sup>

TOTAL — 88M<sup>2</sup>



Disclaimer: These are preliminary, indicative floor plans not drawn to scale and are subject to planning and other approvals. Please note that these floor plans were produced prior to completion of construction. Any measurements shown are approximate and have been taken from the Draft Strata Plan. Location and extent of solid façade elements, apartment dimensions, floor and apartment layouts, levels, designs, diagrams, structures, configurations and ratios of different configurations, tile set-out, areas, fittings, finishes and specifications are approximate only and subject to change without notice in accordance with the provisions of the Contract of Sale or where required for compliance, planning, building regulations or other laws or for any other reason. The furniture is not included with any sale unless otherwise disclosed in the Contract for Sale. Prospective purchasers must make and only rely on their own assessments and seek their own professional advice in all respects. Prepared March 2023. These are representations as to future matters based on an honest and reasonable view currently held by the vendor but what is represented is subject to planning and other approvals.