

# Apartment 101

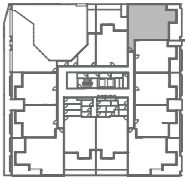


**CARMEL**  
CAULFIELD

Bedrooms	<b>3</b>
Bathrooms	<b>2</b>
Carspace	<b>2</b>
Storage Cage	<b>12m<sup>3</sup></b>

Apartment	<b>119m<sup>2</sup></b>
Balcony & Terrace	<b>35m<sup>2</sup></b>
Total	<b>154m<sup>2</sup></b>

<b>WIR</b>	Walk-in Robe	<b>R</b>	Robe
<b>P</b>	Pantry	<b>S</b>	Storage
<b>OV</b>	Oven Under Cooktop	<b>EU</b>	Entertainment Unit
<b>DW</b>	Dishwasher	←	Sliding Doors



HAWTHORN ROAD

L1

Note: All areas shown are approximate. The information contained herein has been obtained from sources we believe to be reliable and therefore have no reason to doubt it's accuracy. The vendor and it's agent will not be responsible for any error or mis-description which may appear. Prospective purchasers or leasees are therefore advised to make what ever investigations they deem necessary.

# Apartment 201

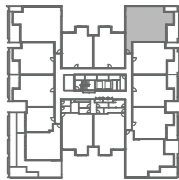


**CARMEL**  
CAULFIELD

Bedrooms	<b>3</b>
Bathrooms	<b>2</b>
Carspace	<b>2</b>
Storage Cage	<b>9m<sup>3</sup></b>

Apartment	<b>118m<sup>2</sup></b>
Balcony / Terrace	<b>20m<sup>2</sup></b>
Total	<b>138m<sup>2</sup></b>

<b>WIR</b>	Walk-in Robe	<b>R</b>	Robe
<b>P</b>	Pantry	<b>S</b>	Storage
<b>OV</b>	Oven Under Cooktop	<b>EU</b>	Entertainment Unit
<b>DW</b>	Dishwasher	<b>←</b>	Sliding Doors



HAWTHORN ROAD

L2

Note: All areas shown are approximate. The information contained herein has been obtained from sources we believe to be reliable and therefore have no reason to doubt it's accuracy. The vendor and it's agent will not be responsible for any error or mis-description which may appear. Prospective purchasers or leasees are therefore advised to make what ever investigations they deem necessary.

# Apartment 212

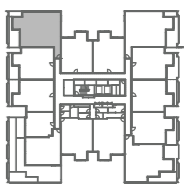


**CARMEL**  
CAULFIELD

Bedrooms	<b>3</b>
Bathrooms	<b>2</b>
Carspace	<b>2</b>
Storage Cage	<b>9m<sup>3</sup></b>

Apartment	<b>119m<sup>2</sup></b>
Balcony / Terrace	<b>19m<sup>2</sup></b>
Total	<b>138m<sup>2</sup></b>

<b>WIR</b>	Walk-in Robe	<b>R</b>	Robe
<b>P</b>	Pantry	<b>S</b>	Storage
<b>OV</b>	Oven Under Cooktop	<b>EU</b>	Entertainment Unit
<b>DW</b>	Dishwasher	<b>←</b>	Sliding Doors



HAWTHORN ROAD

L2

Note: All areas shown are approximate. The information contained herein has been obtained from sources we believe to be reliable and therefore have no reason to doubt it's accuracy. The vendor and it's agent will not be responsible for any error or mis-description which may appear. Prospective purchasers or leasees are therefore advised to make what ever investigations they deem necessary.