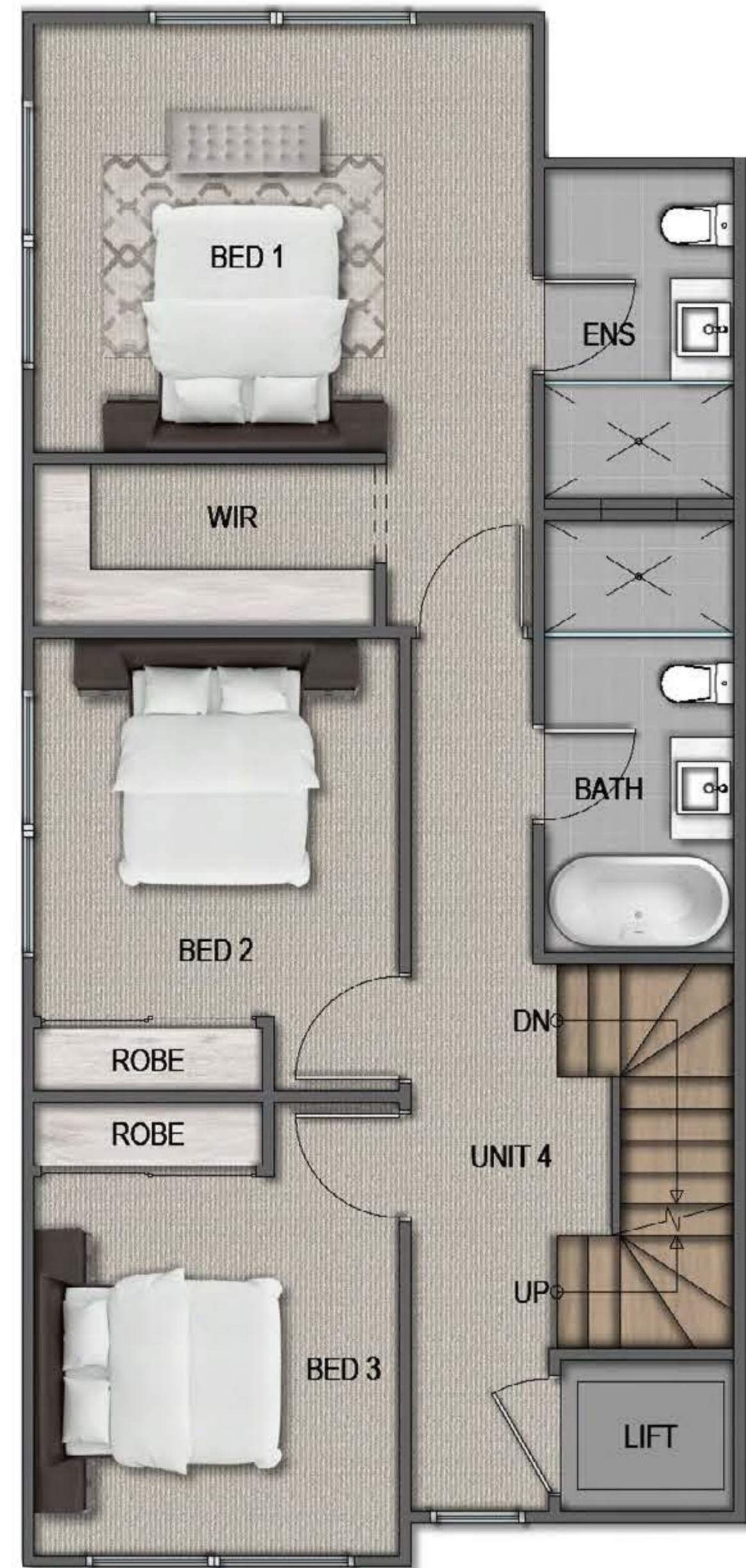
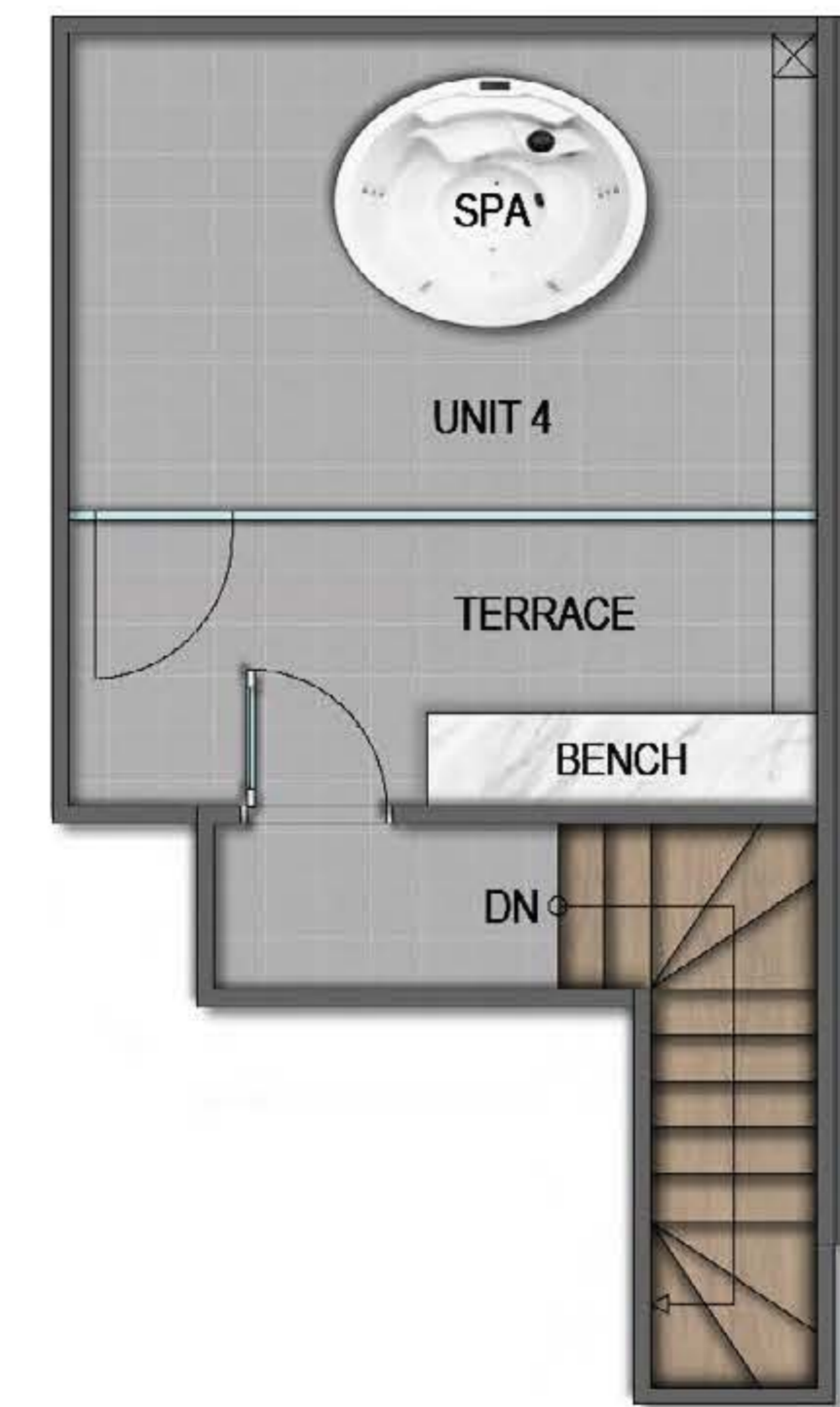




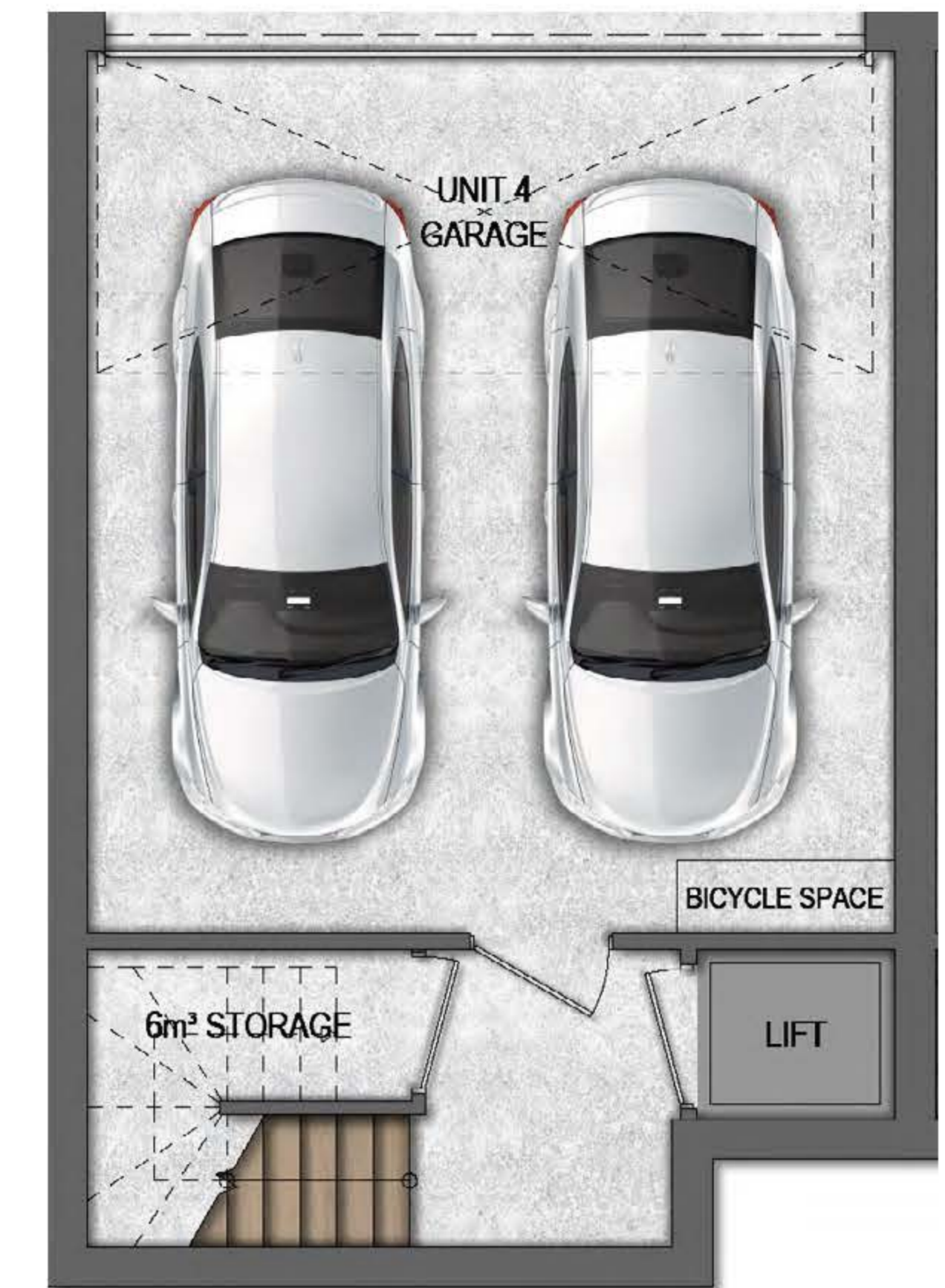
**GROUND FLOOR**



**FIRST FLOOR**



**SECOND FLOOR**

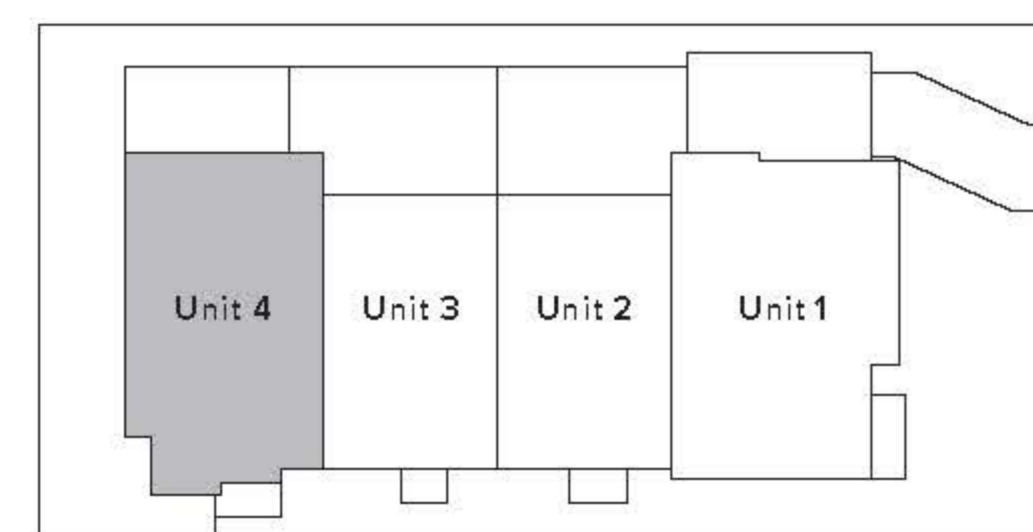


**BASEMENT**

**UNIT 4**



BASEMENT	49.80 m <sup>2</sup>	TERRACE	17.43 m <sup>2</sup>
GROUND FLOOR	78.07 m <sup>2</sup>	PORCH	2.69 m <sup>2</sup>
FIRST FLOOR	67.47 m <sup>2</sup>	TOTAL S.P.O.S	88.35 m <sup>2</sup>
ROOF TERRACE	22.96 m <sup>2</sup>	LAND SIZE	169.66 m <sup>2</sup>
<b>TOTAL FLOOR AREA</b>	<b>25.66 SQ / 238.42 m<sup>2</sup></b>	<b>TOTAL AREA</b>	<b>35.17 SQ / 326.77 m<sup>2</sup></b>



**DISCLAIMER:** This document has been produced by the developer for advertising and general information only. The developer and its project team do not guarantee, warranty or represent that the information contained within this document is correct. Any interested parties should undertake their own enquiries as to the accuracy of this document. The developer excludes unequivocally all inferred or implied terms, conditions and warranties arising out of this document and excludes all liability for loss and are subject to change without notice and should be verified by the purchaser on or prior to exchange. The information contained herein is believed to be current but is not guaranteed. Furniture is not included.

**DONCASTER VIC 3108**