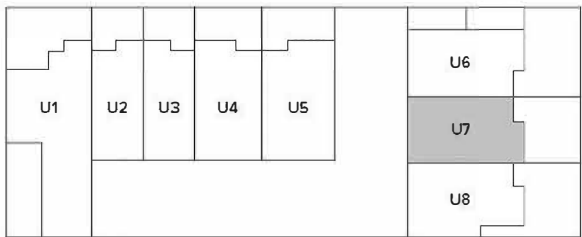


NOBLE PARK VIC 3174

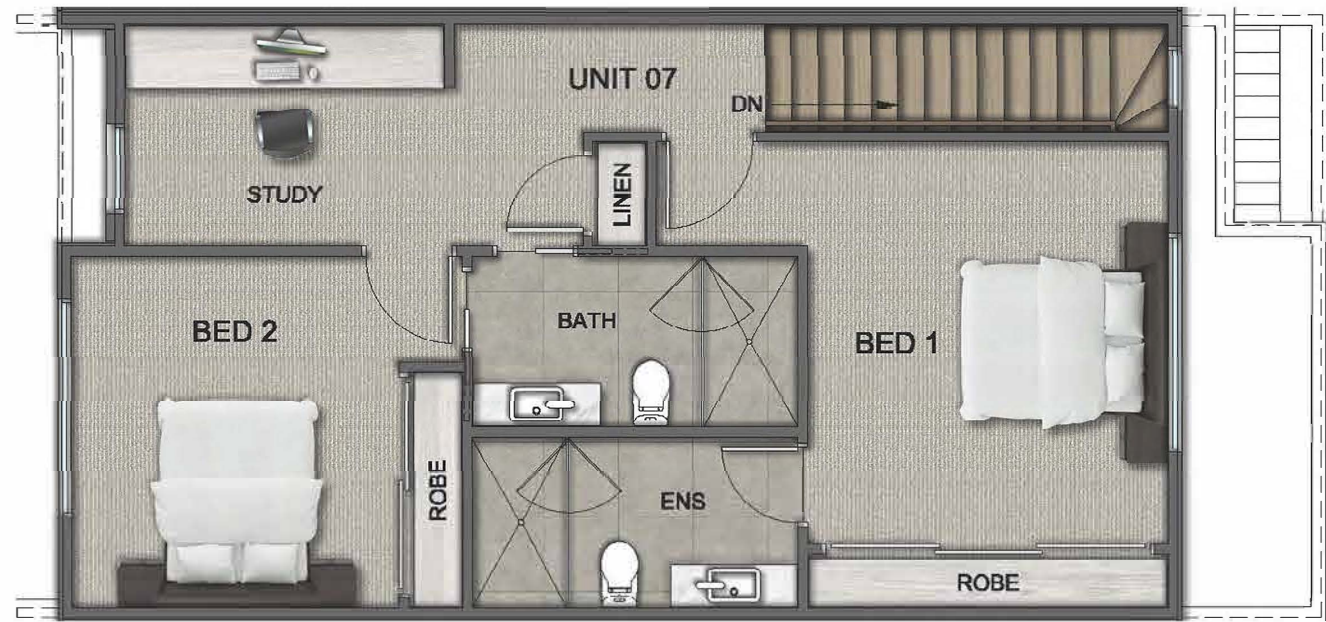
UNIT 7

3	3	3	2

GROUND FLOOR	57 m ²
FIRST FLOOR	59 m ²
SECOND FLOOR	61 m ²
TOTAL FLOOR AREA	19.0 SQ / 177 m²
S.P.O.S	10 m ²
TOTAL P.O.S	41 m ²
LAND SIZE	110.77 m ²
TOTAL AREA	23.47 SQ / 218 m²



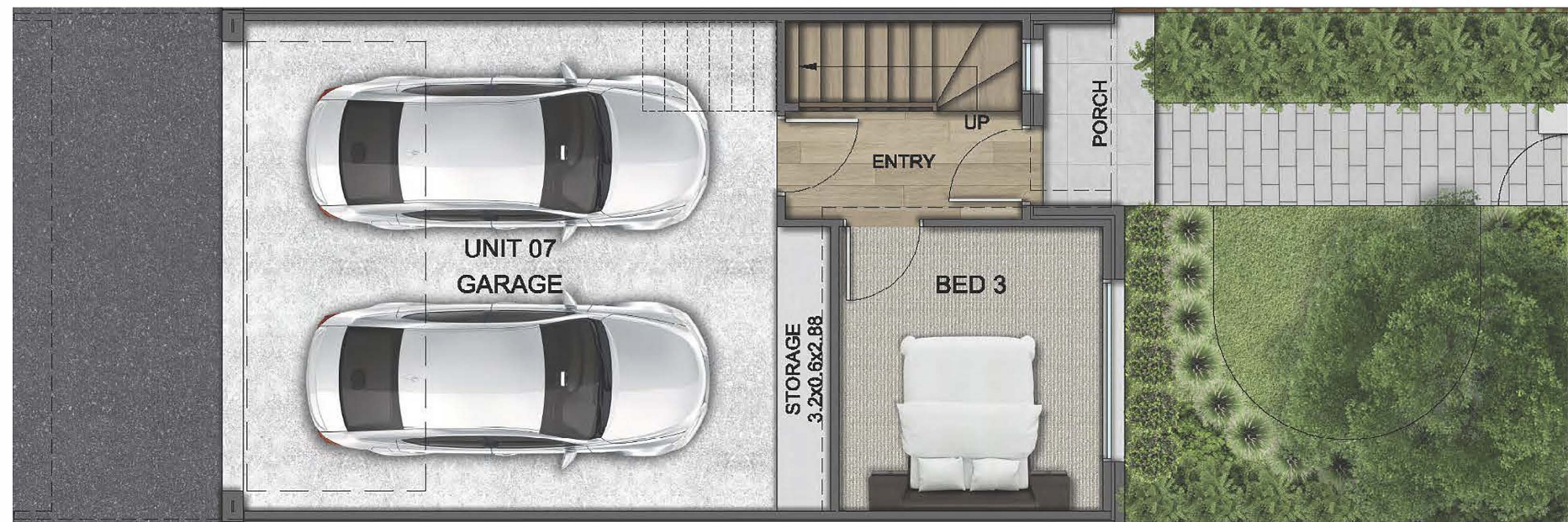
DISCLAIMER: This document has been produced by the developer for advertising and general information only. The developer and its project team do not guarantee, warranty or represent that the information contained within this document is correct. Any interested parties should undertake their own enquiries as to the accuracy of this document. The developer excludes unequivocally all inferred or implied terms, conditions and warranties arising out of this document and excludes all liability for loss and are subject to change without notice and should be verified by the purchaser on or prior to exchange. The information contained herein is believed to be current but is not guaranteed. Furniture is not included.



SECOND FLOOR



FIRST FLOOR



GROUND FLOOR