

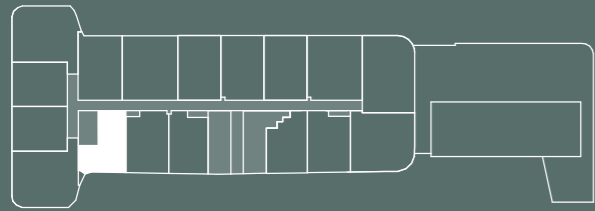
# ARIA

MELBOURNE

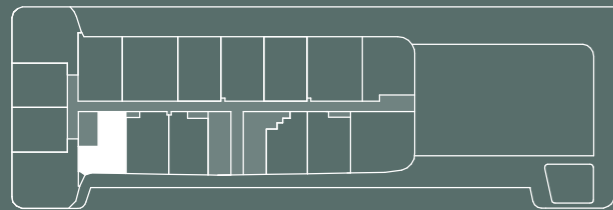
## Type 1J.1

ARIA COLLECTION:  
1 BED 1 BATH

Internal 43.4m<sup>2</sup> | External 6.9m<sup>2</sup>  
Total Area 50.3m<sup>2</sup>



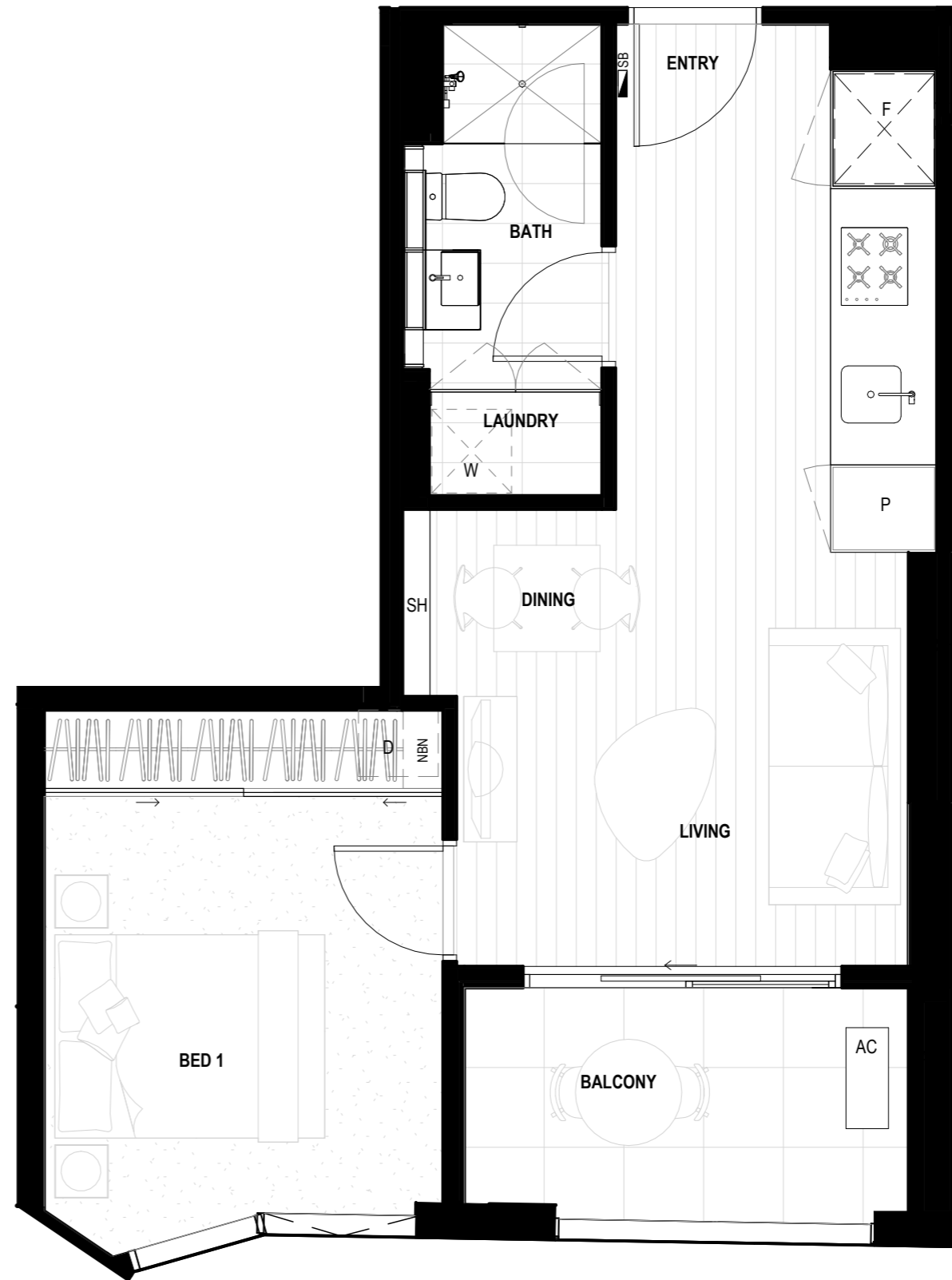
Level 5-6 - Apt 514, 614



Level 4 - Apt 412

STURT ST

DODDS ST



- P PANTRY
- F FRIDGE
- S STORAGE
- W WASHING MACHINE
- AC AIR-CON CONDENSER
- SB SWITCH BOARD
- NBN NBN CONNECTION BOX



**evolve**  
DEVELOPMENT

Disclaimer: Whilst we endeavour to ensure the contents of this document are correct at the time of printing, the information it contains is to be used as a guide only. This document was completed prior to the completion of final design, engineering and construction of the project, therefore design, engineering, dimensions, fittings and specifications are subject to change. All areas are provided in accordance with the Method of Measurement for Residential Property provided by the Property Council of Australia.