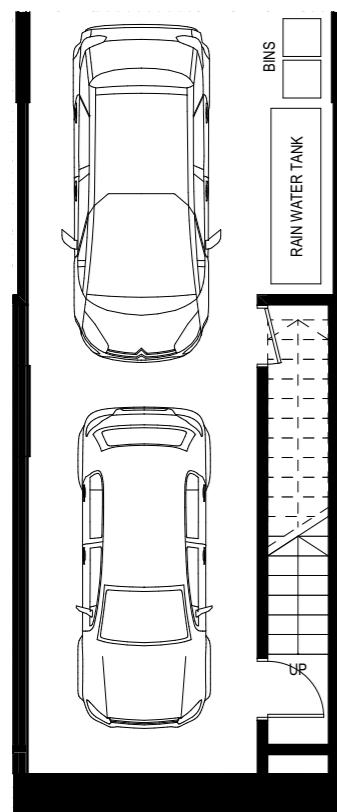


**TYPE C**  
 3 BED  
 2 BATH  
 2 CARS

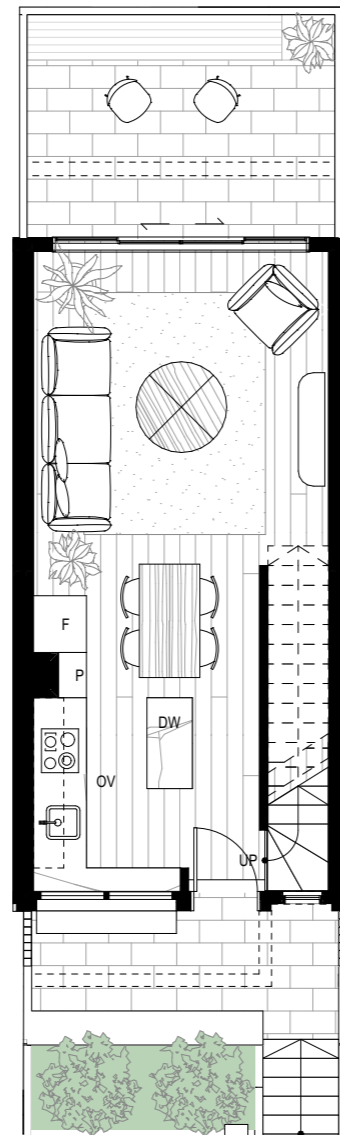
BASEMENT: 44m<sup>2</sup>  
 GROUND FLOOR: 34m<sup>2</sup>  
 FIRST FLOOR: 41m<sup>2</sup>  
 SECOND FLOOR: 29m<sup>2</sup>  
**TOTAL INTERNAL:** 148m<sup>2</sup>

GROUND FLOOR EXTERNAL: 25m<sup>2</sup>  
 FIRST FLOOR EXTERNAL: 10m<sup>2</sup>  
**TOTAL EXTERNAL:** 35m<sup>2</sup>

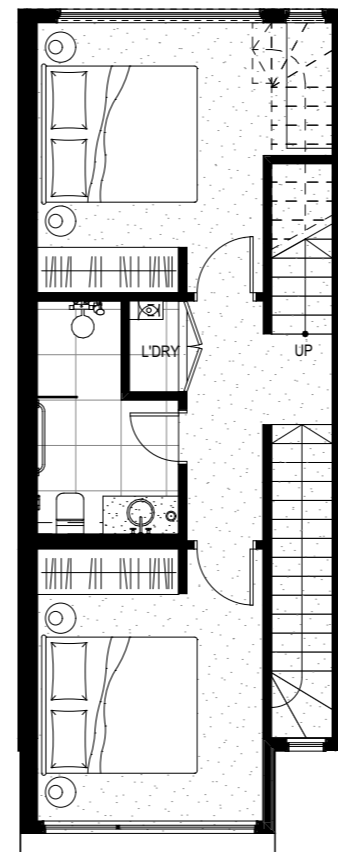
TOWNHOUSE 3,5,10,12



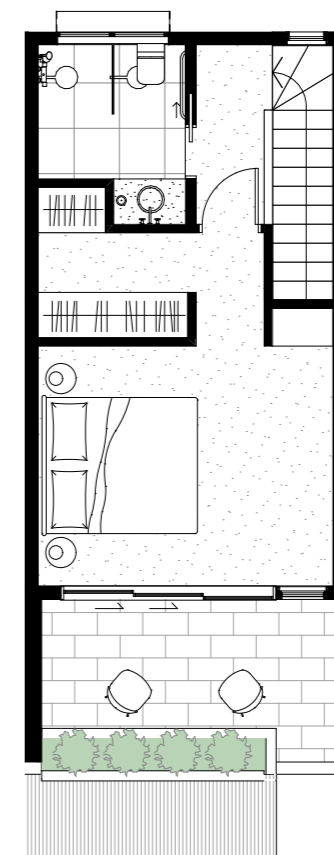
BASEMENT



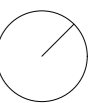
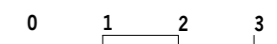
GROUND FLOOR



FIRST FLOOR



SECOND FLOOR



**PRELIMINARY**

147-157 PRINCES STREET  
 FLEMINGTON  
 FEASIBILITY STUDY

22/04/2021