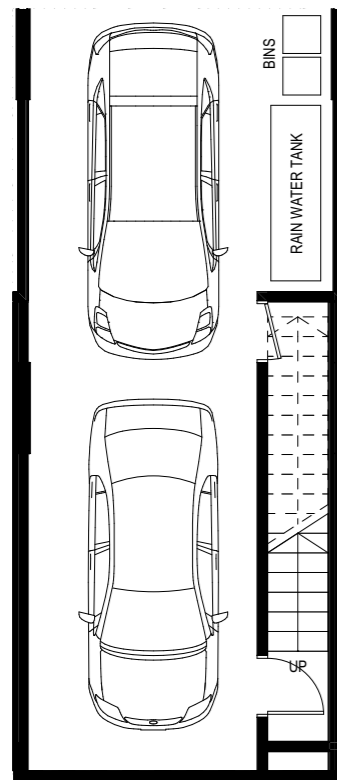


TYPE B
 2 BED
 2 BATH
 2 CARS

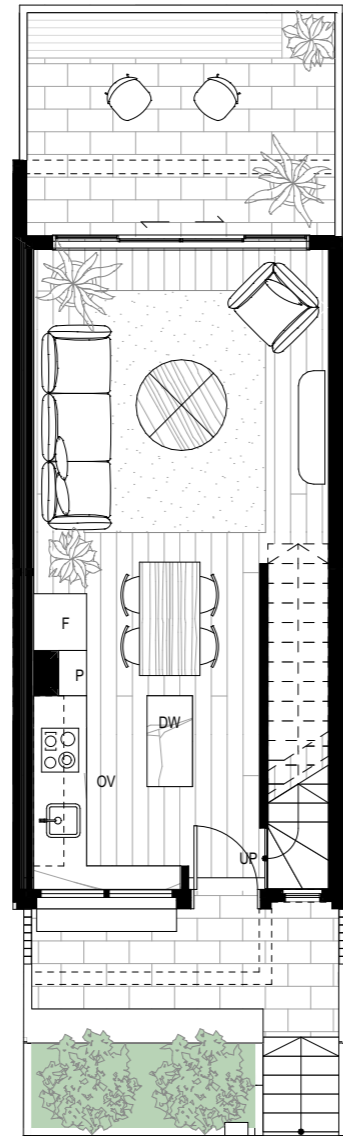
BASEMENT: 44m²
 GROUND FLOOR: 34m²
 FIRST FLOOR: 41m²
 SECOND FLOOR: 29m²
TOTAL INTERNAL: 148m²

GROUND FLOOR EXTERNAL: 25m²
 FIRST FLOOR EXTERNAL: 10m²
TOTAL EXTERNAL: 35m²

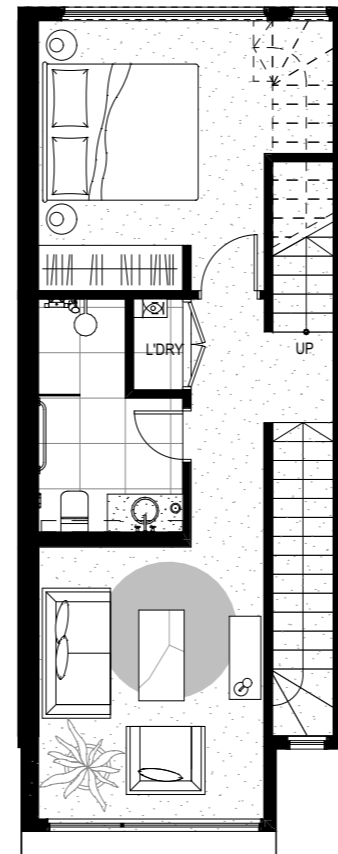
TOWNHOUSE 2,4,8,9,11



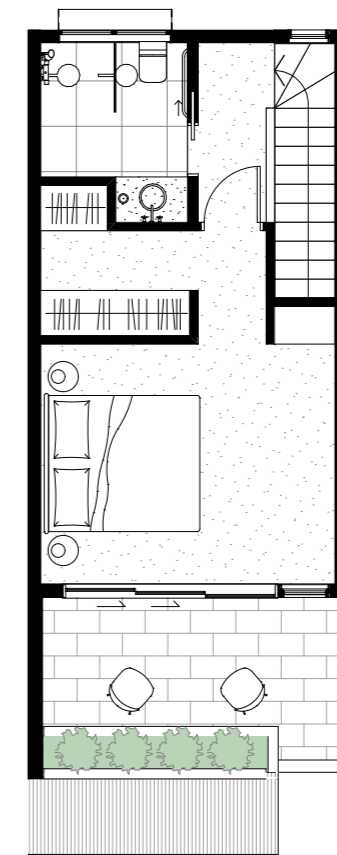
BASEMENT



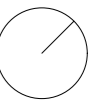
GROUND FLOOR



FIRST FLOOR



SECOND FLOOR



PRELIMINARY

147-157 PRINCES STREET
 FLEMINGTON
 FEASIBILITY STUDY

22/04/2021

Pitch

Pitch Architecture + Design
 47 Coppin St Richmond VIC 3121
 pitchAD.com.au 03 9046 2811
 info@pitchAD.com.au