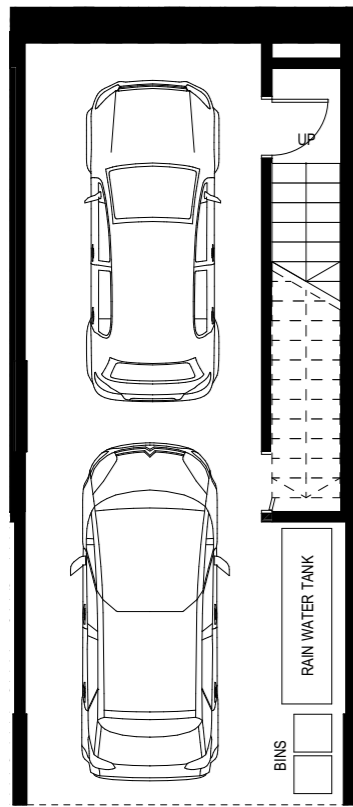


**TYPE C1**  
 3 BED  
 2 BATH  
 2 CARS

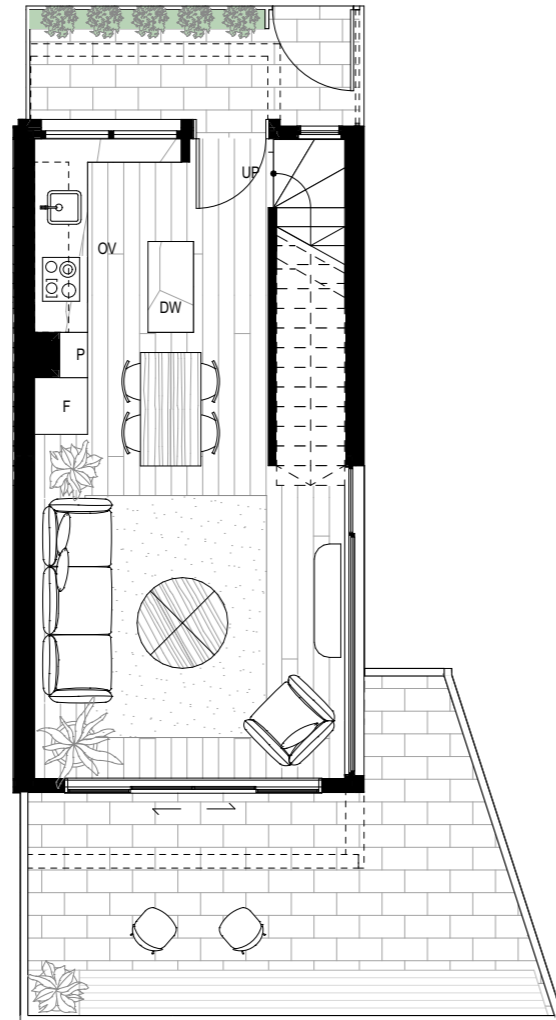
BASEMENT: 47m<sup>2</sup>  
 GROUND FLOOR: 36m<sup>2</sup>  
 FIRST FLOOR: 44m<sup>2</sup>  
 SECOND FLOOR: 31m<sup>2</sup>  
**TOTAL INTERNAL:** 158m<sup>2</sup>

GROUND FLOOR EXTERNAL: 29m<sup>2</sup>  
 FIRST FLOOR EXTERNAL: 11m<sup>2</sup>  
**TOTAL EXTERNAL:** 40m<sup>2</sup>

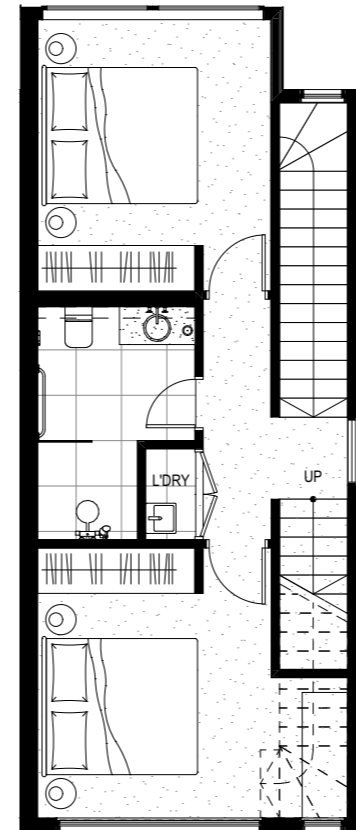
TOWNHOUSE 18



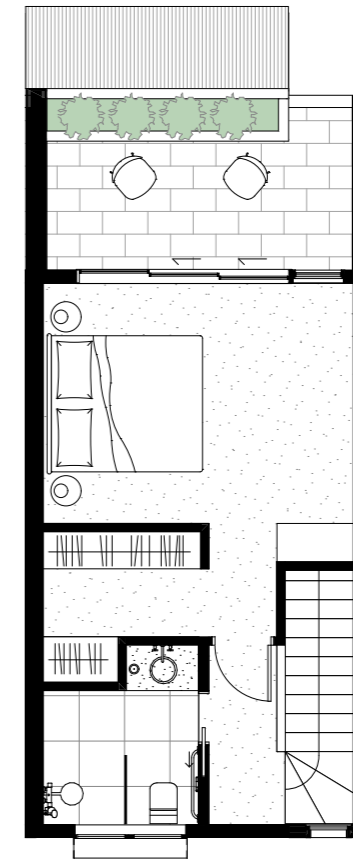
BASEMENT



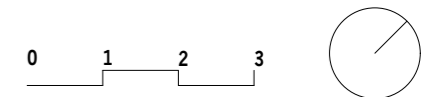
GROUND FLOOR



FIRST FLOOR



SECOND FLOOR



**PRELIMINARY**

147-157 PRINCES STREET  
 FLEMINGTON  
 FEASIBILITY STUDY  
 22/04/2021

**Pitch**

Pitch Architecture + Design  
 47 Coppin St Richmond VIC 3121  
 pitchAD.com.au 03 9046 2811  
 info@pitchAD.com.au