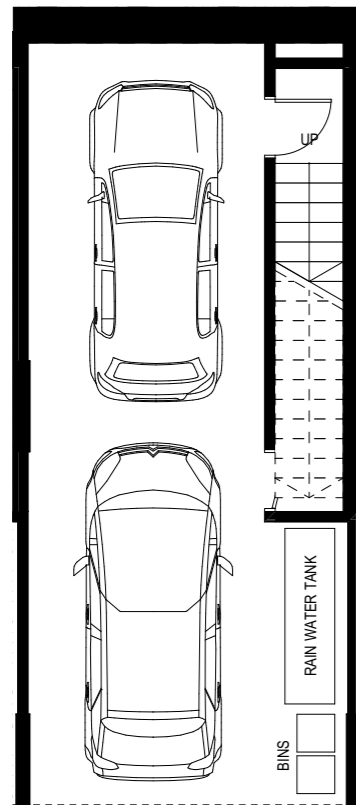


TYPE E
 3 BED
 2 BATH
 2 CARS

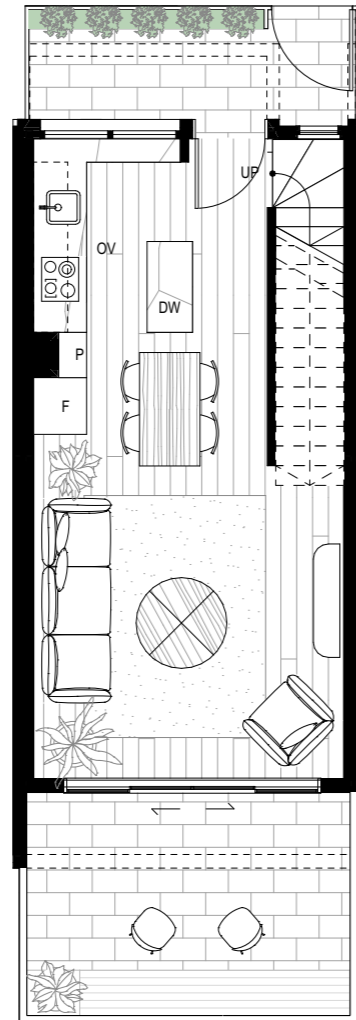
BASEMENT: 46m²
 GROUND FLOOR: 35m²
 FIRST FLOOR: 43m²
 SECOND FLOOR: 30m²
TOTAL INTERNAL: 154m²

GROUND FLOOR EXTERNAL: 20m²
 FIRST FLOOR EXTERNAL: 11m²
TOTAL EXTERNAL: 31m²

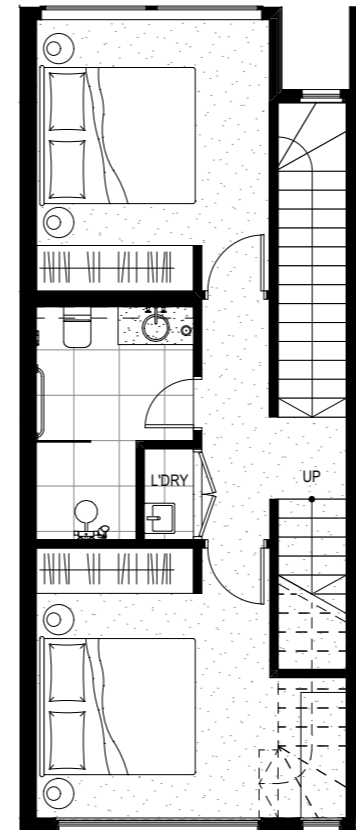
TOWNHOUSE 14,16,20,21



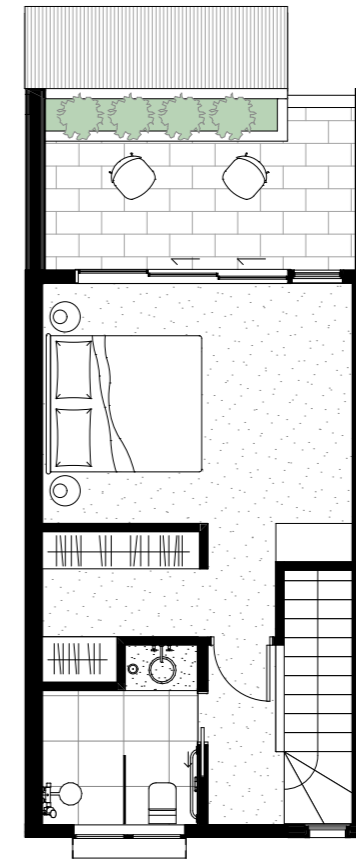
BASEMENT



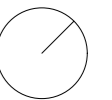
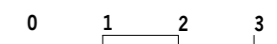
GROUND FLOOR



FIRST FLOOR



SECOND FLOOR



PRELIMINARY

147-157 PRINCES STREET
 FLEMINGTON
 FEASIBILITY STUDY

22/04/2021

Pitch

Pitch Architecture + Design
 47 Coppin St Richmond VIC 3121
 pitchAD.com.au 03 9046 2811
 info@pitchAD.com.au