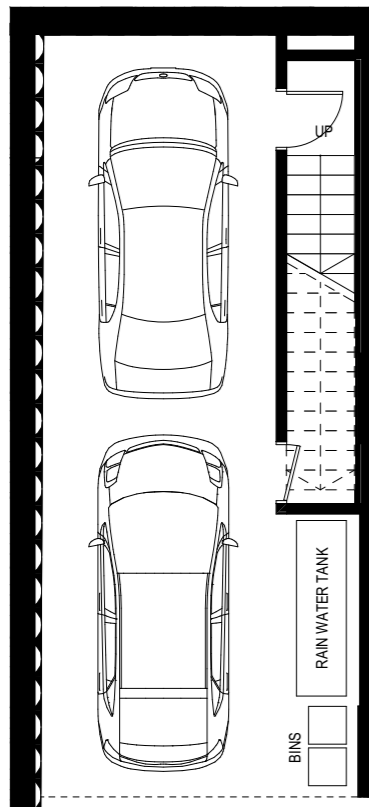


TYPE D
 2 BED
 1 BATH
 2 CARS

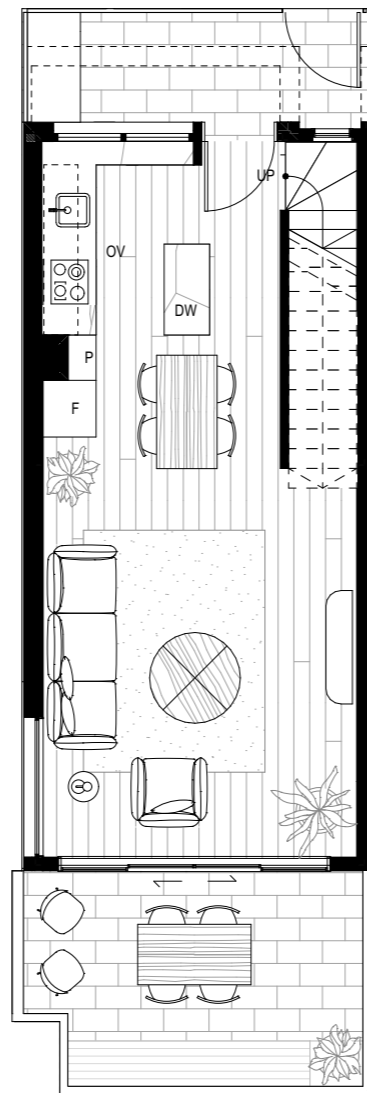
BASEMENT: 50m²
 GROUND FLOOR: 47m²
 FIRST FLOOR: 46m²
TOTAL INTERNAL: 143m²

GROUND FLOOR EXTERNAL: 21m²
TOTAL EXTERNAL: 21m²

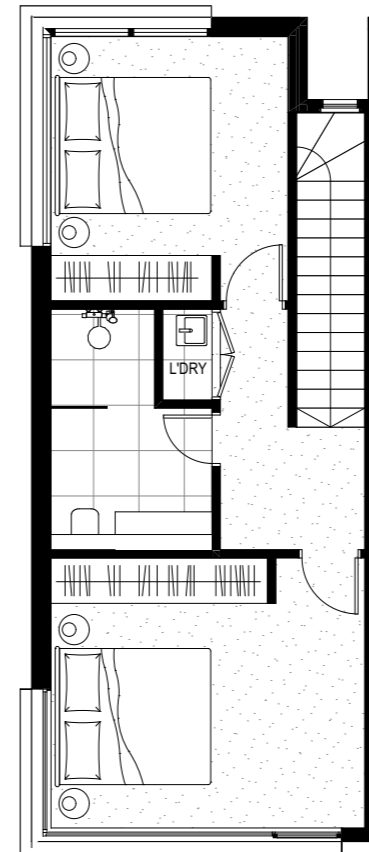
TOWNHOUSE 13



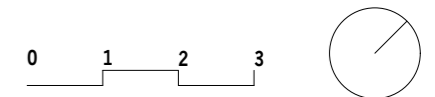
BASEMENT



GROUND FLOOR



FIRST FLOOR



PRELIMINARY

147-157 PRINCES STREET
 FLEMINGTON
 FEASIBILITY STUDY

22/04/2021

Pitch

Pitch Architecture + Design
 47 Coppin St Richmond VIC 3121
 pitchAD.com.au 03 9046 2811
 info@pitchAD.com.au