

№4

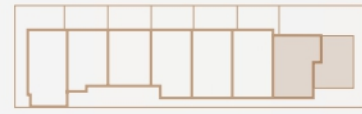
ALFRISTON HOUSE

TOWNHOUSE ONE

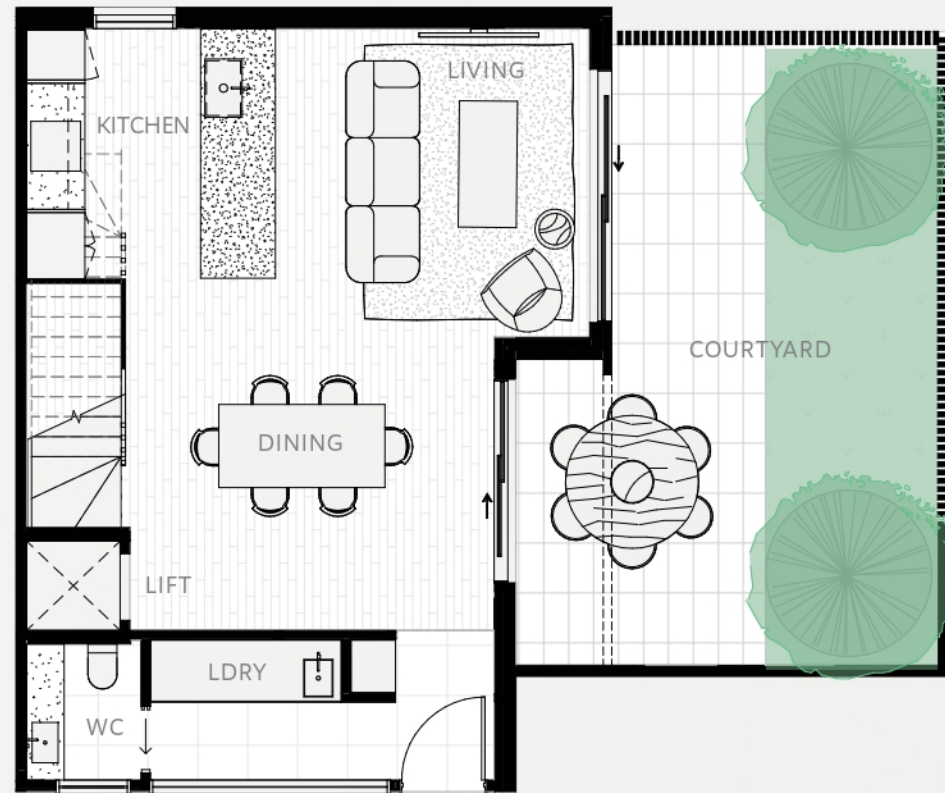
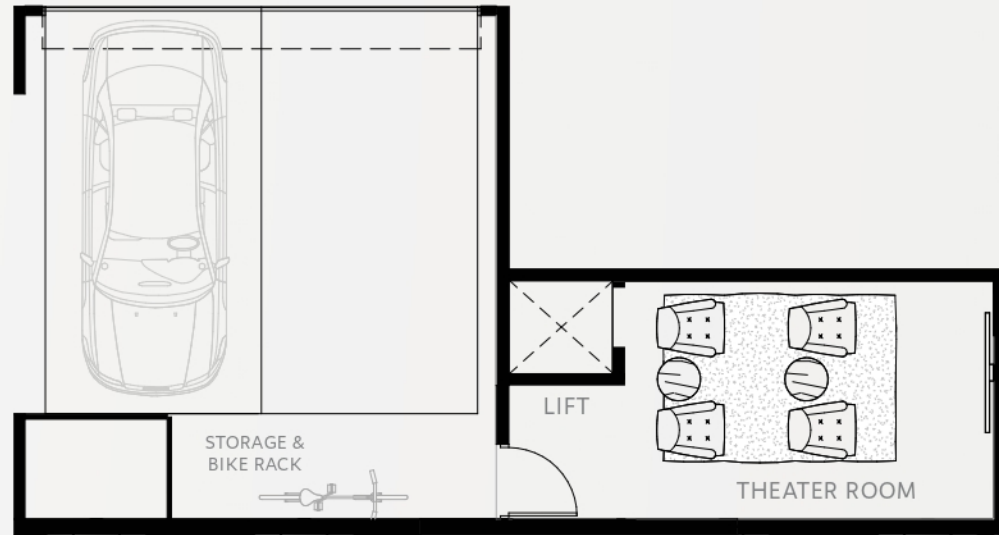
3 BEDROOM 3 BATHROOM 2 CAR PARK

DIMENSIONS

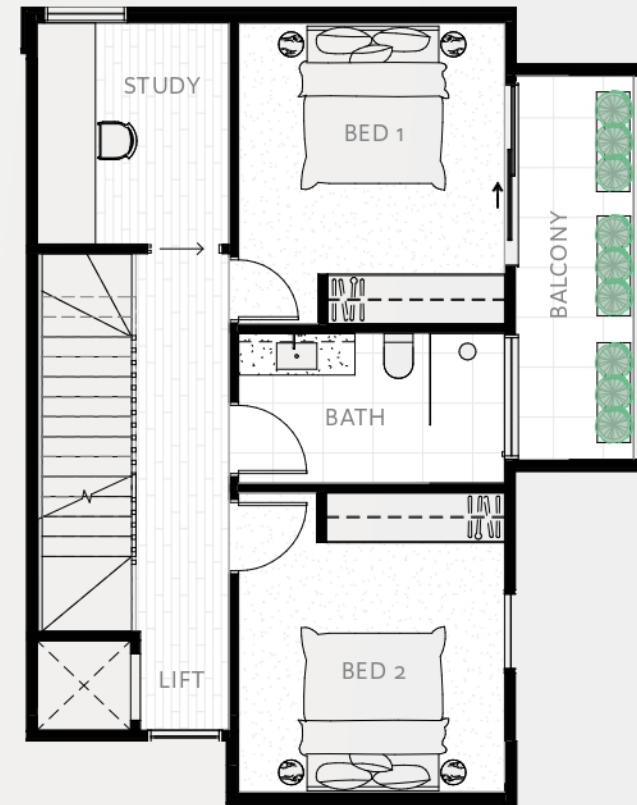
BASEMENT - 15m ²	GROUND - 62m ²
COURTYARD - 35m ²	FIRST FLOOR - 55m ²
BALCONIES TOTAL - 51m ²	SECOND FLOOR - 52m ²
TOTAL AREA - 184m ²	



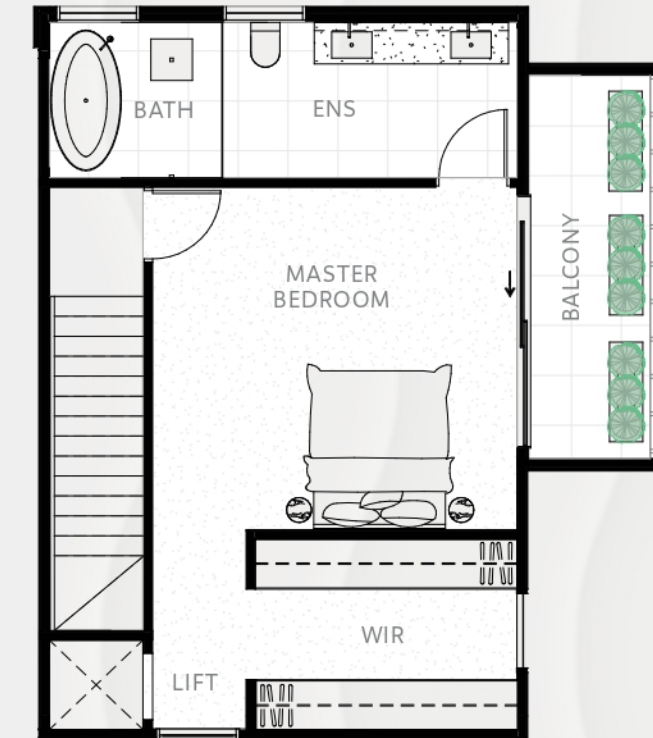
BASEMENT



GROUND



LEVEL 1



LEVEL 2