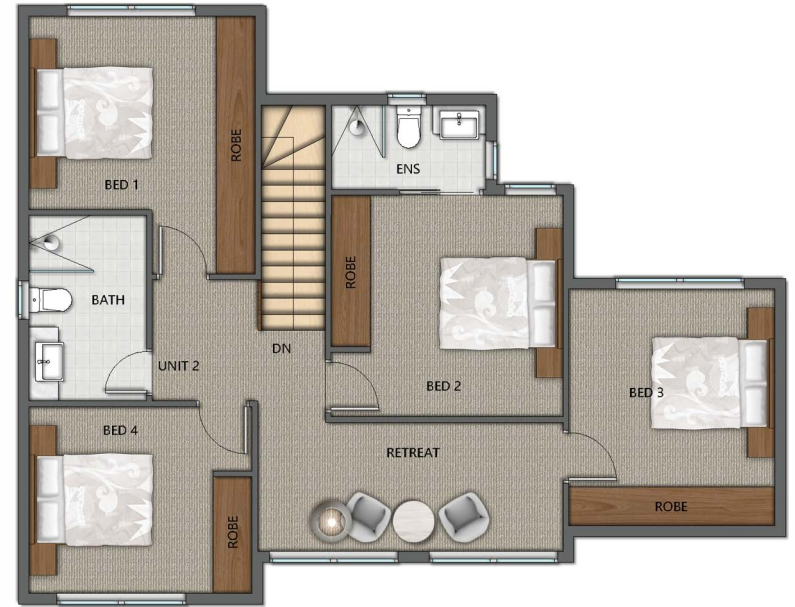


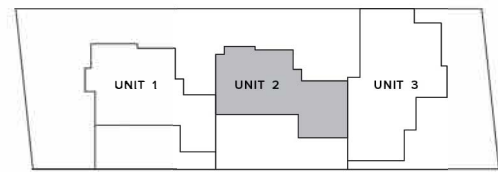


GROUND FLOOR



FIRST FLOOR

UNIT 2	4	2.5	2	
CROYDON VIC 3136	GROUND FLOOR	111.5 m ²	PAVING	20 m ²
	FIRST FLOOR	81 m ²	P.O.S.	81 m ²
			S.P.O.S.	77.4 m ²
	TOTAL FLOOR AREA	20.72 SQ / 192.5 m²	TOTAL AREA	293.5 m²



DISCLAIMER: This document has been produced by the developer for advertising and general information only. The developer and its project team do not guarantee, warranty or represent that the information contained within this document is correct. Any interested parties should undertake their own enquiries as to the accuracy of this document. The developer excludes unequivocally all inferred or implied terms, conditions and warranties arising out of this document and excludes all liability for loss and are subject to change without notice and should be verified by the purchaser on or prior to exchange. The information contained here in is believed to be correct but is not guaranteed. Furniture is not included.