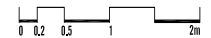
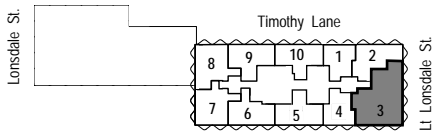
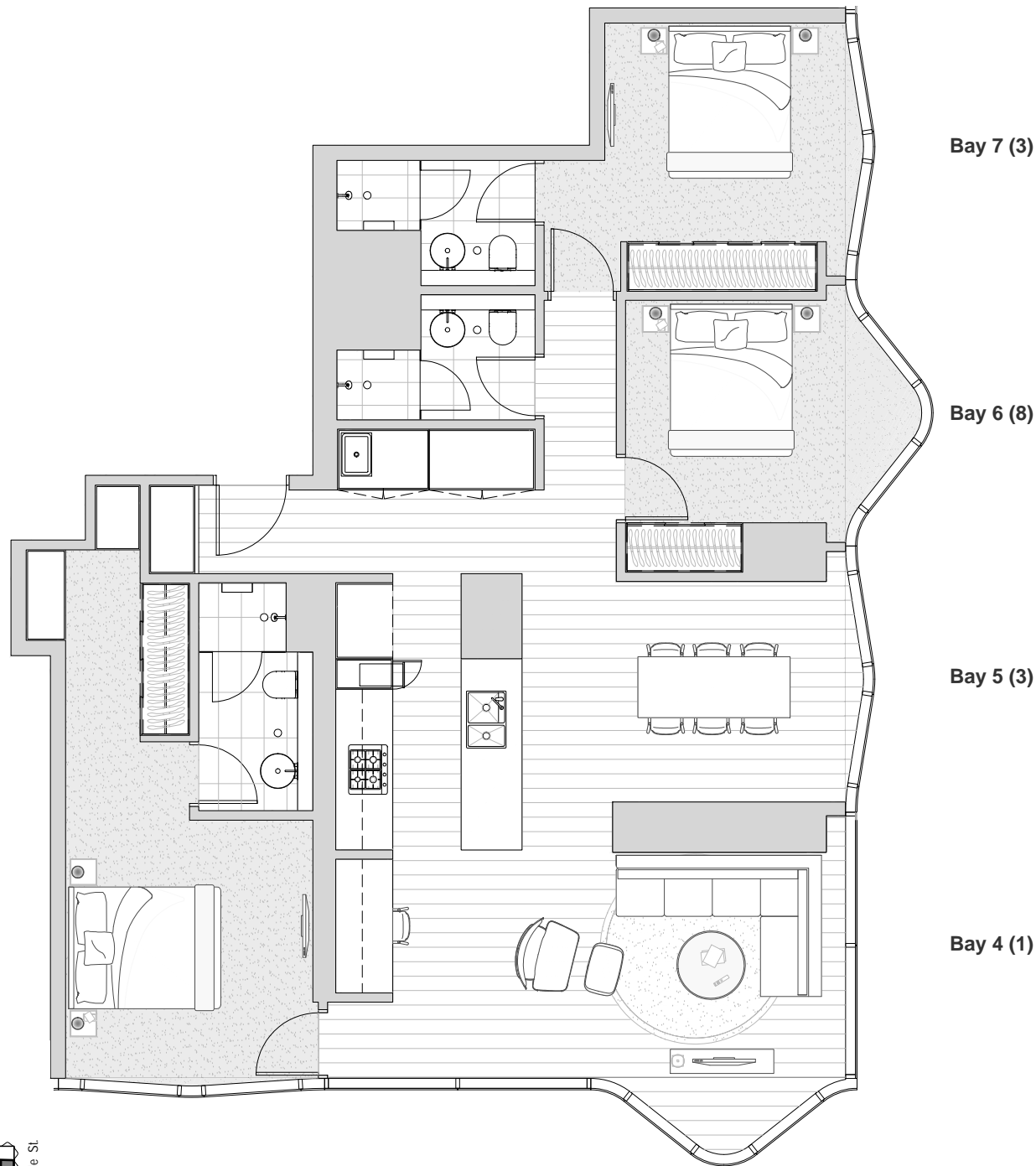




MELBOURNE

APARTMENT: 6003

3 Bedroom & 3 Bathroom
 Apartment Type D4
 AREA: 125.7 m²



INDIVIDUAL APARTMENT PLAN

Plans are indicative and may be varied in accordance with Contract of Sale. Furniture depicted is not included. Refer to the Contract of Sale for included fixtures & fittings. Areas are calculated using the Property Council of Australia's Method of Measurement for Residential Property

Revision: A Updated: 03/03/2017

