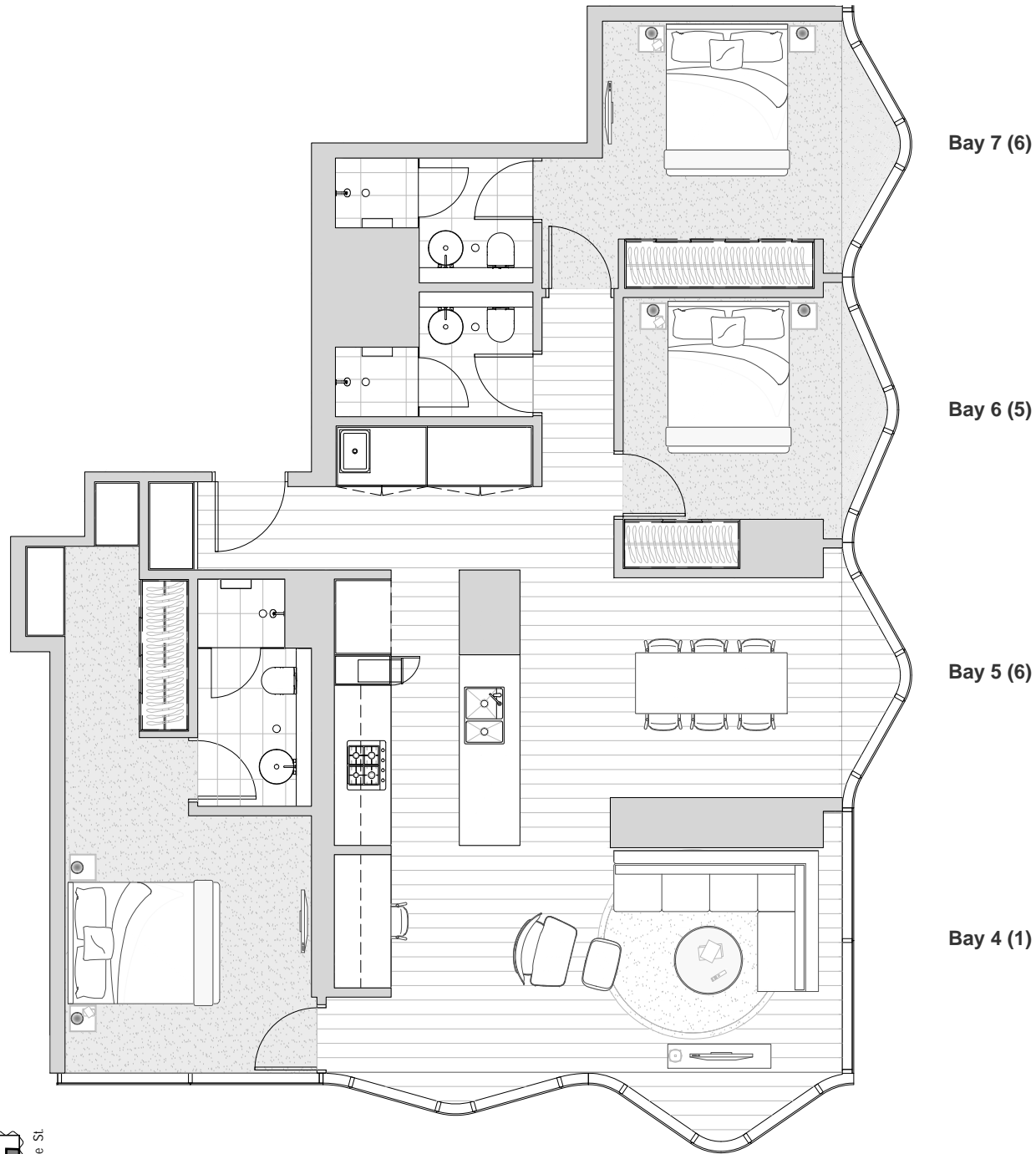




MELBOURNE

# APARTMENT: 5703

3 Bedroom & 3 Bathroom  
 Apartment Type D4  
 AREA: 127.3 m<sup>2</sup>



Bay 1 (1)

Bay 2 (4)

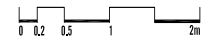
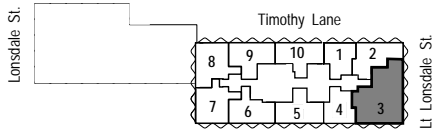
Bay 3 (7)

Bay 7 (6)

Bay 6 (5)

Bay 5 (6)

Bay 4 (1)



## INDIVIDUAL APARTMENT PLAN

Plans are indicative and may be varied in accordance with Contract of Sale. Furniture depicted is not included. Refer to the Contract of Sale for included fixtures & fittings. Areas are calculated using the Property Council of Australia's Method of Measurement for Residential Property

Revision: A Updated: 03/03/2017

