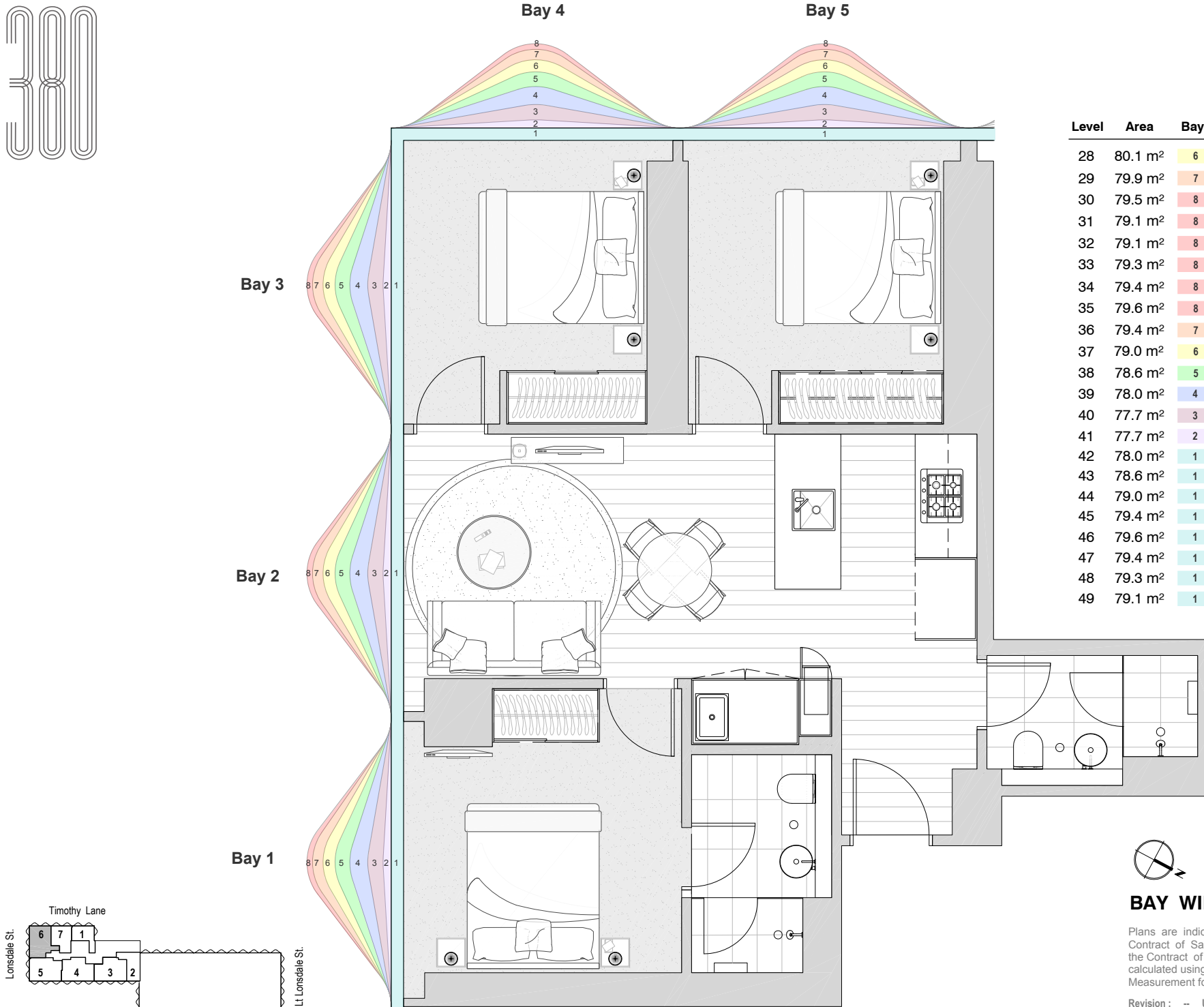


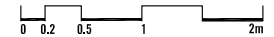
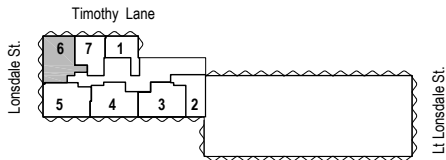


APARTMENT 06

3 Bedrooms & 2 Bathrooms
Apartment **Type D1**
South Tower



Level	Area	Bay 1	Bay 2	Bay 3	Bay 4	Bay 5
28	80.1 m ²	6	5	1	7	4
29	79.9 m ²	7	4	1	8	3
30	79.5 m ²	8	3	1	8	2
31	79.1 m ²	8	2	1	8	1
32	79.1 m ²	8	1	2	8	1
33	79.3 m ²	8	1	3	8	1
34	79.4 m ²	8	1	4	7	1
35	79.6 m ²	8	1	5	6	1
36	79.4 m ²	7	1	6	5	1
37	79.0 m ²	6	1	7	4	1
38	78.6 m ²	5	1	8	3	1
39	78.0 m ²	4	1	8	2	1
40	77.7 m ²	3	1	8	1	2
41	77.7 m ²	2	1	8	1	3
42	78.0 m ²	1	2	8	1	4
43	78.6 m ²	1	3	8	1	5
44	79.0 m ²	1	4	7	1	6
45	79.4 m ²	1	5	6	1	7
46	79.6 m ²	1	6	5	1	8
47	79.4 m ²	1	7	4	1	8
48	79.3 m ²	1	8	3	1	8
49	79.1 m ²	1	8	2	1	8



BAY WINDOWS MATRIX PLAN

Plans are indicative and may be varied in accordance with Contract of Sale. Furniture depicted is not included. Refer to the Contract of Sale for included fixtures & fittings. Areas are calculated using the Property Council of Australia's Method of Measurement for Residential Property

Revision: -- Updated: 08/09/2017

