

Melior

Residence G04

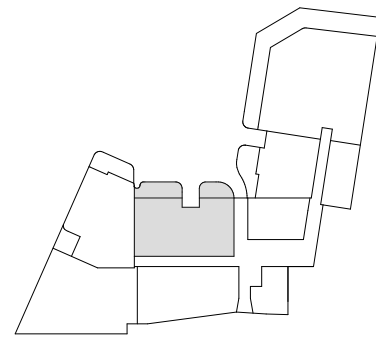
APARTMENT TYPE

3 bedroom; 2 bathroom

APARTMENT AREA

Internal	138.5m ²
External	29.5m ²
Total	168.0m ²

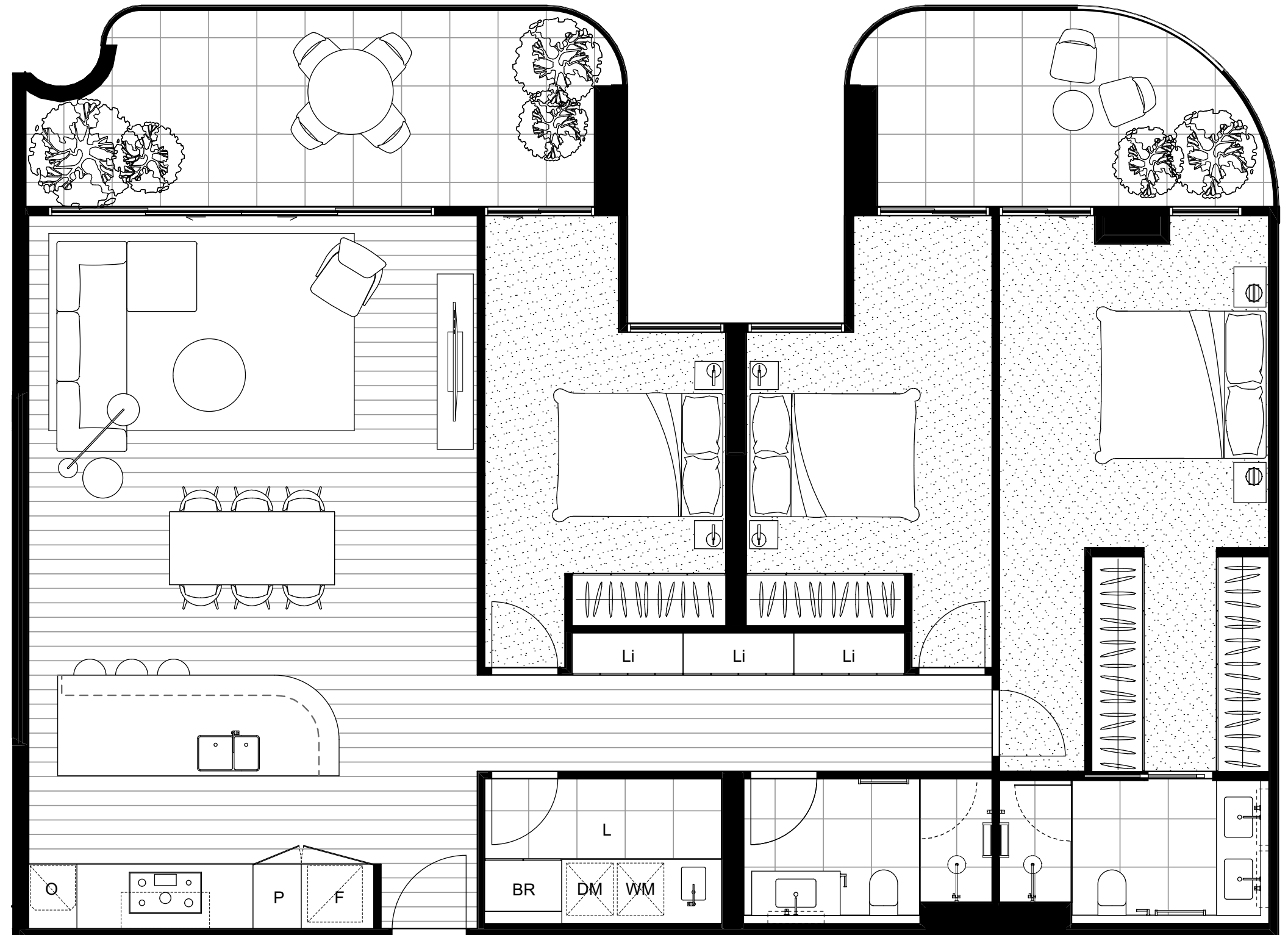
GROUND FLOOR



Sheirlaw Avenue



PRIVACY SCREEN TO 1700



This floor plan is a guide only and was prepared prior to detailed design and construction. Information contained herein is believed to be correct but is not guaranteed. Changes may be made to the layout during the development in accordance with the provisions of the contract of sales, building regulations and planning requirements. Furniture is not included in the package. Landscaping shown is indicative only. Purchaser upgrade option may be shown. Refer to contract of sales specification for details. Dimensions are approximate, and the areas shown have been measured in accordance with the Property Council of Australia method of measurement for residential property. Prospective purchaser must rely on their own enquiries.