

# Melior

## Residence 105

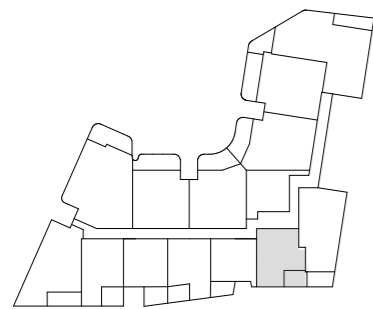
### APARTMENT TYPE

1 bedroom; 1 bathroom

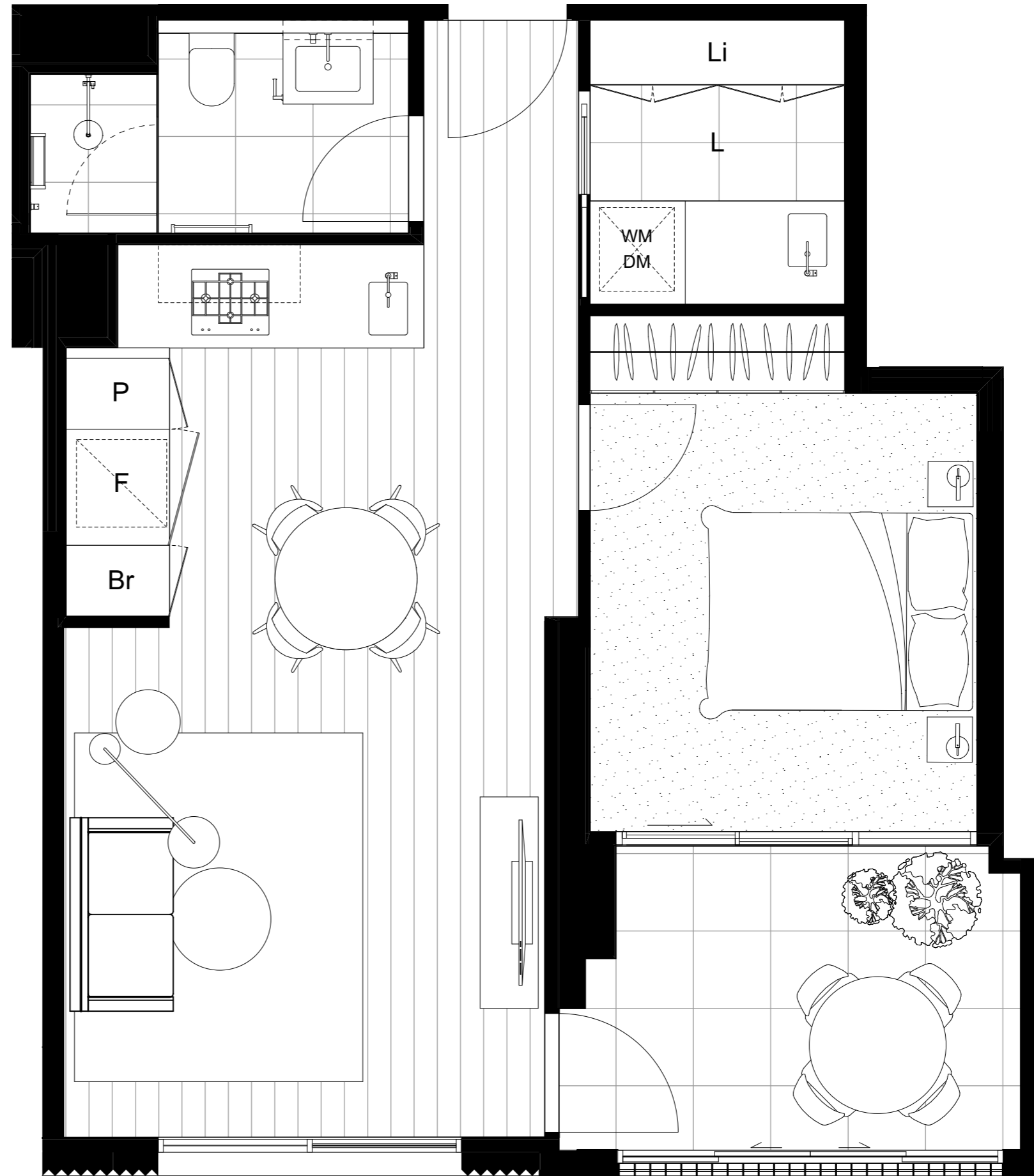
### APARTMENT AREA

Internal	54.5m <sup>2</sup>
External	9.0m <sup>2</sup>
Total	63.5m <sup>2</sup>

### FIRST FLOOR



Sheirlaw Avenue



This floor plan is a guide only and was prepared prior to detailed design and construction. Information contained herein is believed to be correct but is not guaranteed. Changes may be made to the layout during the development in accordance with the provisions of the contract of sales, building regulations and planning requirements. Furniture is not included in the package. Landscaping shown is indicative only. Purchaser upgrade option may be shown. Refer to contract of sales specification for details. Dimensions are approximate, and the areas shown have been measured in accordance with the Property Council of Australia method of measurement for residential property. Prospective purchaser must rely on their own enquiries.