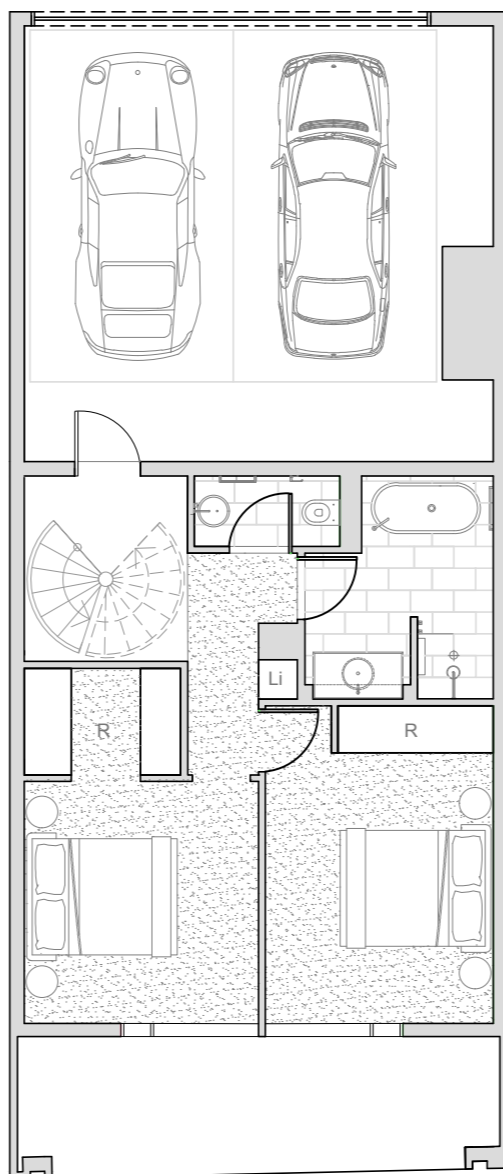
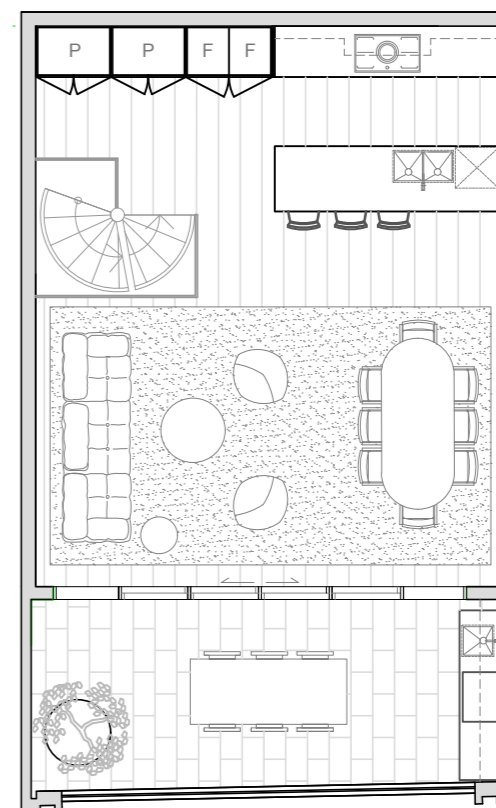


GROUND FLOOR LEVEL



MEZZANINE LEVEL

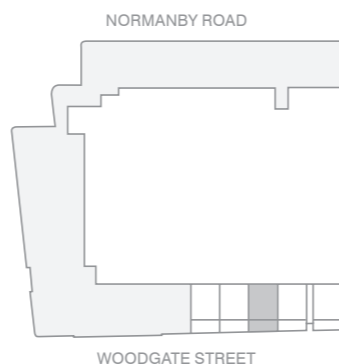


FIRST FLOOR LEVEL

# Townhome. Type 08

- |               |            |           |
|---------------|------------|-----------|
| 3 Bedroom     | Total Area | 240.7 sqm |
| 1 Ensuite     | Internal   | 170.2 sqm |
| 1 Powder Room | External   | 31.0 sqm  |
| 1 Bathroom    | Garage     | 39.5 sqm  |
| 2 Carspaces   |            |           |

F: Refrigerator L: Laundry P: Pantry Li: Linen Cupboard R: Robes



**Disclaimer**  
 These plans are for presentation purposes and are to be used as a guide only. These plans were completed prior to the completion of final design, engineering and construction of the building, therefore design, engineering, dimensions, areas, fittings, finishes, window placement, column size and placement and specifications are subject to change without notice in accordance with the provisions of the Contract of Sale. These plans reflect various optional upgrades that may be available at additional cost upon agreement by the parties. Unless expressly included in the specifications in the Contract of Sale, all furniture and white goods are not included. All area calculations are based on Property Council of Australia Residential Method of Measurement guidelines and are an estimate only. Any dimensions or areas may differ from surveyed areas due to different methods of measurement. Location of condenser units may change. Purchasers should check the building plans and specifications included in the Contract of Sale carefully before signing the Contract of Sale.