

SOUTHPOINT

HIGHETT

UG07B 111B

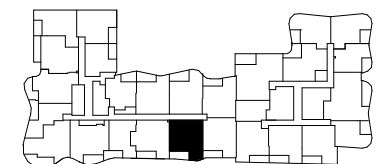
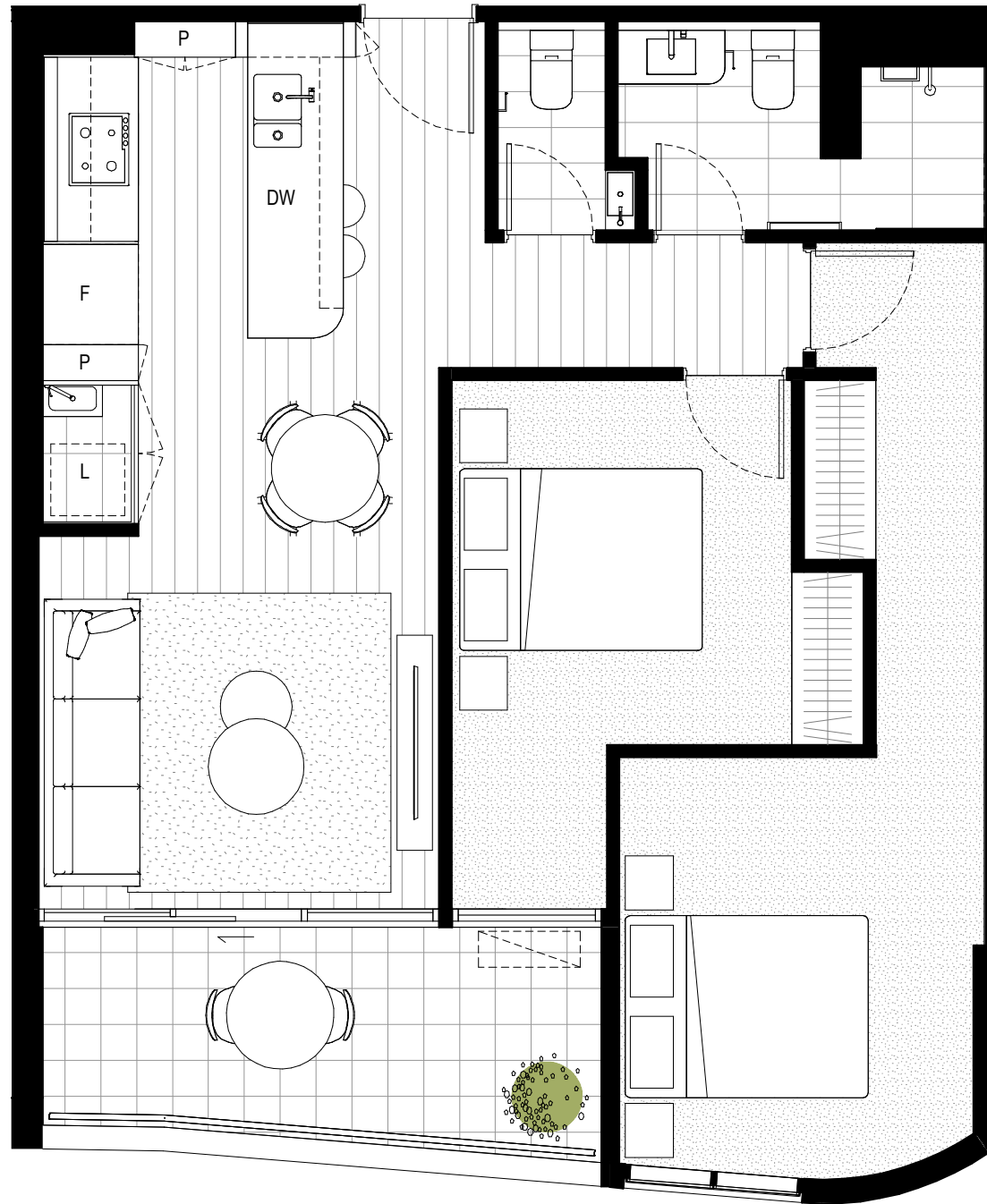
BEDROOM	2	INTERNAL	70.4m ²
BATHROOM	1.5	EXTERNAL	9.7m ²
CARPARK	1	TOTAL	80.1m ²

1233 NEPEAN HWY HIGHETT

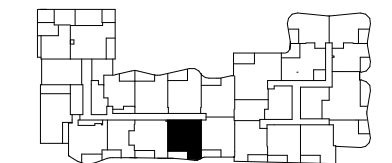
southpointhighett.com.au

Street address is subject to authorities approvals. Areas referred to on this marketing drawing have been determined according to the Property Council of Australia guidelines (Method of Measurement for residential property) and method of measurement may not relate to the boundaries described or shown on the Plan of Subdivision for this development. All areas shown are approximate. The information contained herein has been obtained from sources we believe to be reliable and therefore have no reason to doubt it's accuracy. The vendor and it's agent will not be responsible for any error or mis-description which may appear. Prospective purchasers or leasers are therefore advised to make whatever investigations they deem necessary. All drawings and layouts are indicative only and are subject to approval by relevant authority and alternations due to design development. Furniture is indicative for display purposes only.

**A COMPLETE WAY
OF LIVING**



Level 1



Upper Ground Level

- | | | | |
|----|--------------|---|----------|
| F | Refrigerator | P | Pantry |
| DW | Dishwasher | C | Cupboard |
| L | Laundry | S | Store |

